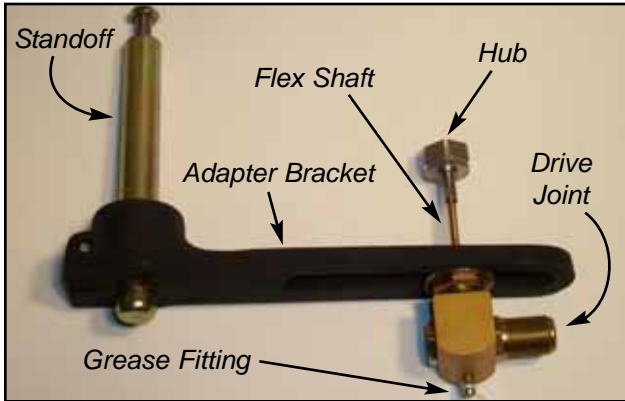




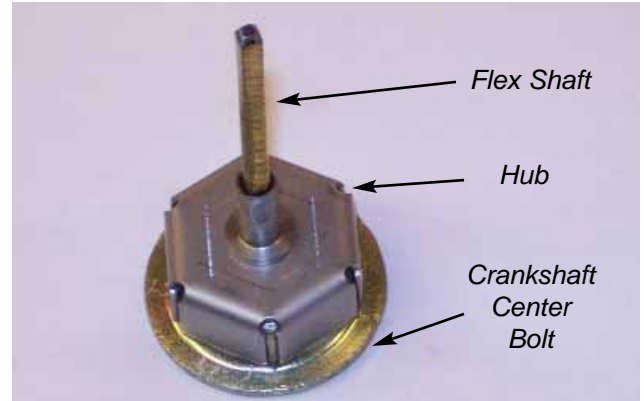
Mechanical Drive Adapter - Yanmar 6LP-STE

This kit is used for supplying tach information for the Glendinning Synchronizer and the Glendinning Electronic Engine Controls for mechanical governor engines only.

This kit includes:

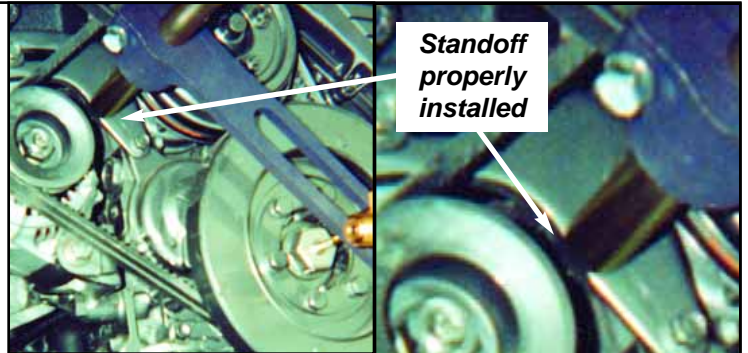


Flex Shaft / Hub Detail:



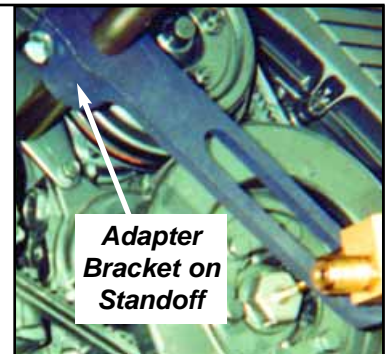
STEP 1: MOUNT STANDOFF

Mount standoff in the empty hole in the alternator bracket.



STEP 2: MOUNT ADAPTER BRACKET

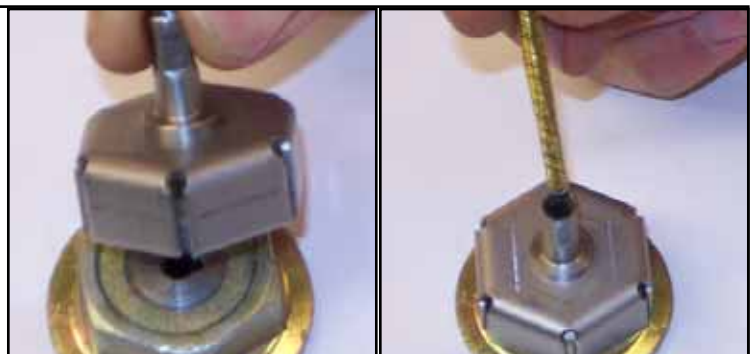
Slide the adapter bracket onto the standoff. DO NOT tighten screw.



STEP 3: MOUNT FLEX SHAFT

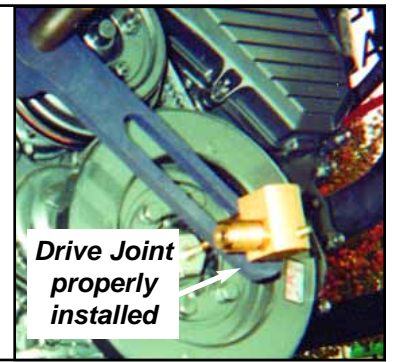
Press Hub onto the hex of the crankshaft center bolt.

Install flex shaft into hub receptacle; apply thin film of grease to tip of flex shaft before installation into hub receptacle.



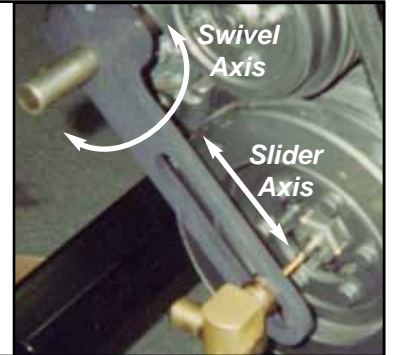
STEP 4: MOUNT DRIVE JOINT

Mount drive joint into the slot of the adapter bracket. Flat washer should be under one of the nuts on the flat side of the adapter bracket. The other nut is retained by the milled groove in the adapter bracket.

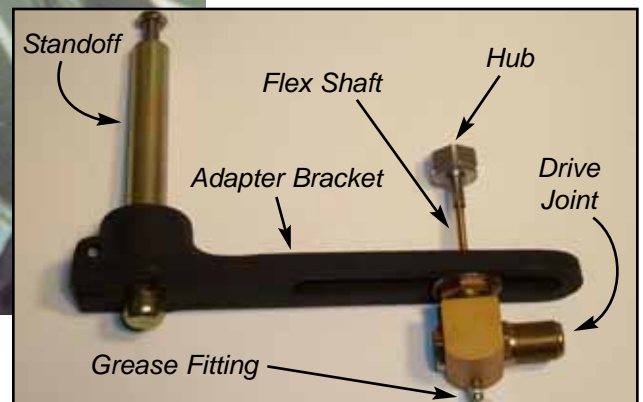
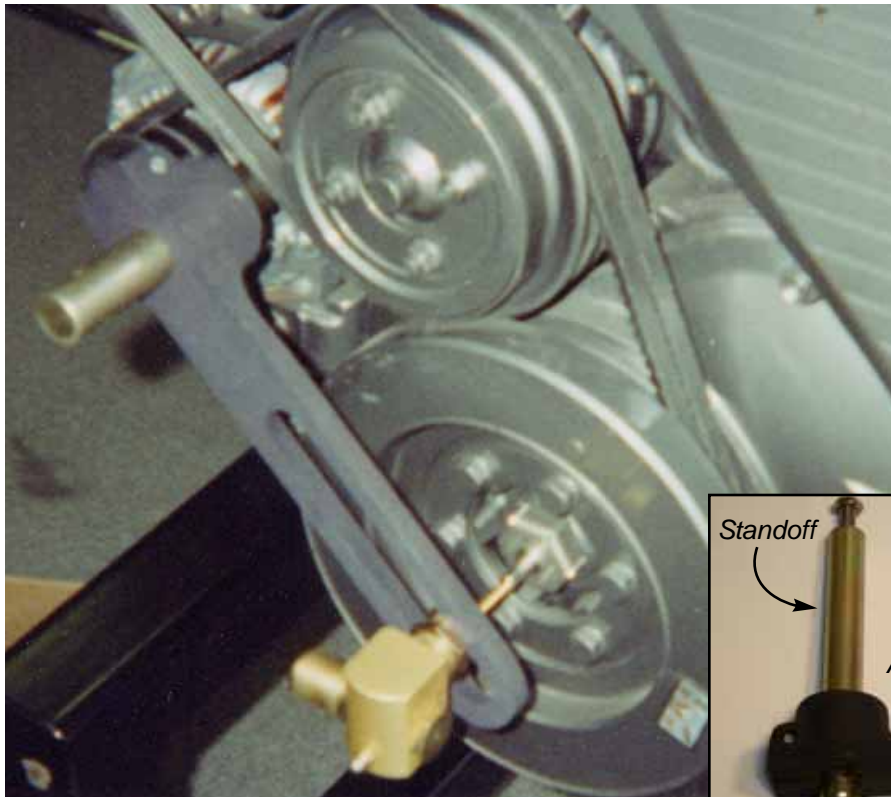


STEP 5: ADJUSTING THE ASSEMBLY

Align the drive joint and adapter bracket on center with the flex shaft. Slide the adapter bracket assembly onto the flex shaft; careful not to compress flex shaft. Utilizing the swivel of the adapter bracket assembly as one axis and the sliding adjustment of the drive joint as the other axis, locate the input of the drive joint to be on center with the crankshaft center bolt. Tighten adapter bracket bolt and the nut that retains the drive joint. Confirm that your center has not shifted and you have approximately 1/16" end play in flex shaft.



Properly Installed



GLENDINNING
MARINE PRODUCTS, INC.

740 Century Circle
Conway, SC 29526

(843) 399-6146
(843) 399-5005
www.glendinningprods.com